



Pilkington Decorative Glass Range

Pilkington Texture Glass
Pilkington Oriel Collection
Pilkington **Optifloat™** Opal



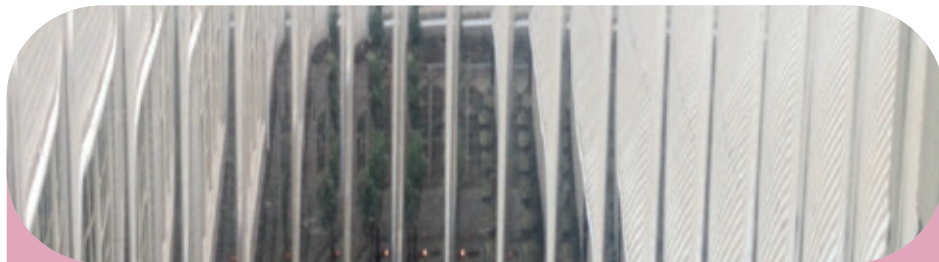
Pilkington Texture Glass

For privacy, pure style or to allow more light into internal rooms, Pilkington Texture Glass gives you a fantastic range of attractive options.

The range offers no fewer than 18 different designs, from traditional to contemporary, no one offers a bigger choice of original designs.

The advantages of Pilkington Texture Glass are easy to see too: it allows maximum light in while maintaining your chosen level of privacy or obscuration, and also forms an attractive decorative feature itself. That's why our texture glass is the most trusted in the market.

With a wide range of original designs and the Pilkington Oriel etched glass range offering even more possibilities – all with the quality you would expect from one of the most recognised glass brands – there really is no better decorative glass choice for your home.



NEW Reeded™

Privacy Level 2

Originally launched 30 years ago, the Reeded design has now been reintroduced to the Pilkington Texture Glass range due to popular demand for traditional patterns as well as our more contemporary designs. The pattern can be positioned either vertically or horizontally to suit your application.

Choose from a wide range of genuine Pilkington designs



Everglade™

Privacy Level 5



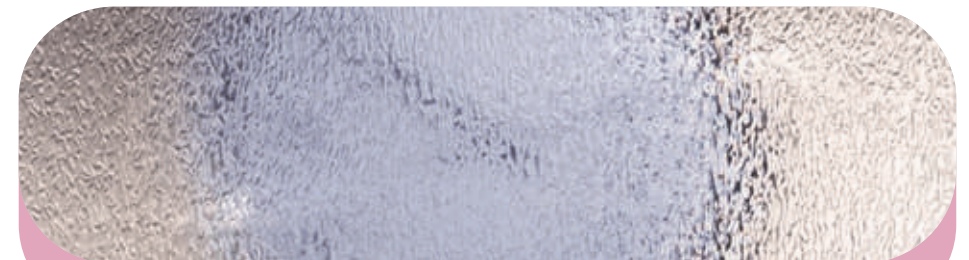
Pelerine™

Privacy Level 5



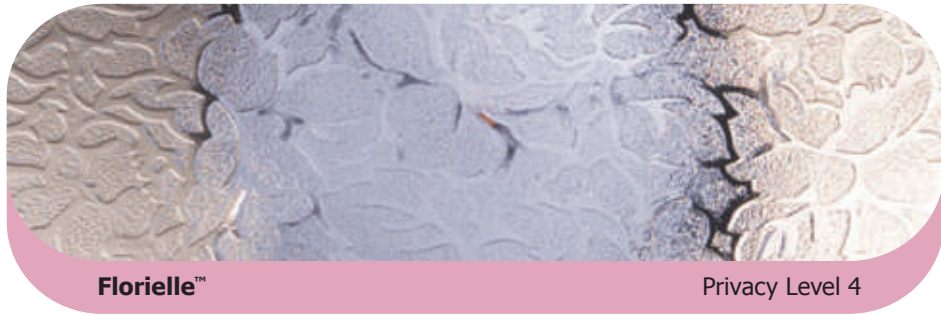
Charcoal Sticks™

Privacy Level 4



Contora™

Privacy Level 4



Florielle™

Privacy Level 4



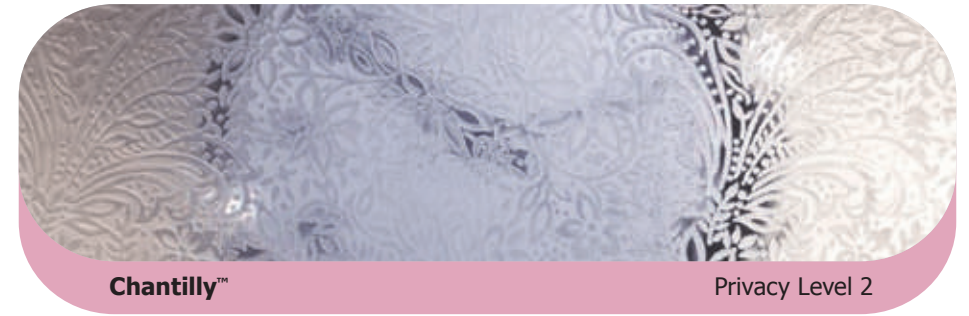
Taffeta™

Privacy Level 3



Mayflower™

Privacy Level 4



Chantilly™

Privacy Level 2



Oak™

Privacy Level 4



Minster™

Privacy Level 2



Digital™

Privacy Level 3



Warwick™

Privacy Level 1

For important information on the use of **Warwick™** please visit pilkington.co.uk/textureglass

Pilkington.co.uk/textureglass

Opal range available at extra cost



Pilkington **Optifloat™** Opal

Privacy Level 5



Canterbury™ Opal

Privacy Level 5



Bay™ Opal

Privacy Level 5

Pilkington Texture Glass Replacement Range

For customers who require replacement glass to match an existing design, a number of well-established designs are still available.



Flemish™

Privacy Level 2



Sycamore™

Privacy Level 2



Autumn™

Privacy Level 3



Arctic™

Privacy Level 4



Stippolyte™

Privacy Level 4



Cotswold™

Privacy Level 5

Technical information

However you use our glass it is essential for safety and performance reasons that it is correctly specified and installed.

Common areas of impact risk, where it is recommended that impact safety glass classified by BS EN 12600 is installed, include:

- Glazed doors
- Glazing adjacent to doors
- Low-level glazing
- Bathroom areas
- Protective barriers
- Furniture and cabinets
- Office screen and partitions



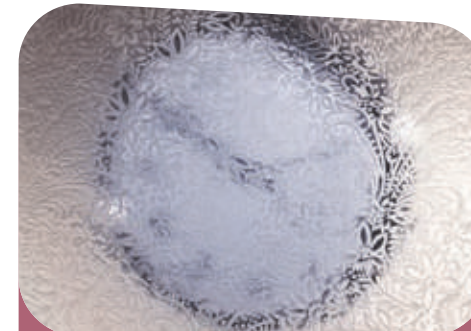
Five levels of privacy

- Pilkington Texture Glass and the Pilkington Oriol Collection offers privacy and style throughout the home
- Five levels of privacy are available, graded from 1 (least obscuration) to 5 (greatest obscuration)
- There are 12 original patterns in the main Pilkington Texture Glass range, including exclusive designs by Oliver Heath of Blustin Heath Design, a regular on the BBC's Home Front and Changing Rooms series
- All are available toughened or laminated for safety and security

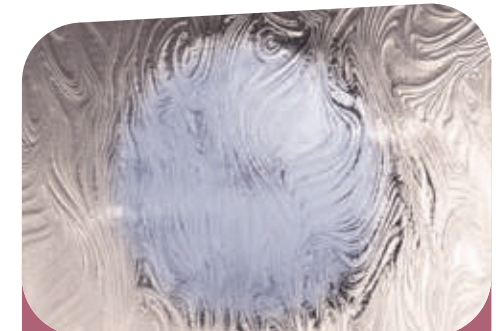
- All are suitable for double glazing
- The range is widely available from your local glass merchant or glazier



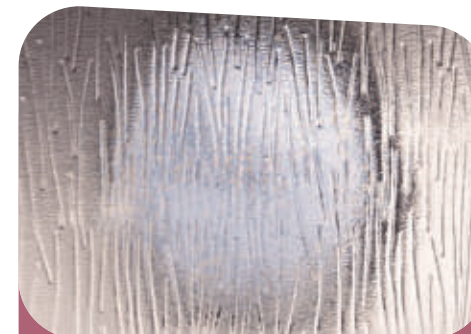
Privacy Level 1



Privacy Level 2



Privacy Level 3



Privacy Level 4



Privacy Level 5

This publication provides only a general description of the products. Further, more detailed, information may be obtained from your local supplier of Pilkington products. It is the responsibility of the user to ensure that the use of these products is appropriate for any particular application and that such use complies with all relevant legislation, standards, codes of practice and other requirements. To the fullest extent permitted by applicable laws, Nippon Sheet Glass Co. Ltd. and its subsidiary companies disclaim all liability for any error in or omission from this publication and for all consequences of relying on it.

The Pilkington Texture Glass design brand names are registered trademarks.

**Please note that imagery throughout is for illustration purposes only.
Bathroom images supplied by Roland Homes.**



CE marking confirms that a product complies with its relevant harmonised European Norm. The CE marking label for each product, including declared values, can be found at www.pilkington.com/CE



Made in the UK

NSG
GROUP

Pilkington United Kingdom Ltd

European Technical Centre, Hall Lane, Lathom, Nr Ormskirk, Lancashire L40 5UF

Telephone 01744 692000 Fax 01744 692880

pilkington@respond.uk.com

www.pilkington.co.uk